



N2753A Windows XP to Windows 7 Upgrade Instructions

for Infiniium 9000/90000 Series Oscilloscopes

Step 1: Verify that the oscilloscope contains the M890 motherboard [1](#)

Step 2: Back up oscilloscope data [3](#)

Step 3: Load the Windows 7 operating system [5](#)

Step 4: Load the oscilloscope application and support code [6](#)

Step 5: Restore oscilloscope data [7](#)

Step 1: Verify that the oscilloscope contains the M890 motherboard

CAUTION

This product is designed for Agilent oscilloscopes containing the M890 motherboard. Please verify that the oscilloscope to be upgraded contains an M890 motherboard before proceeding.



To determine if your Infiniium oscilloscope has an M890 motherboard, use one of these three methods:

- Check the CPU description. Click **Start**, then right-click on **My Computer**, and choose **Properties**.



If it says “Schooner CPU 1.0.12611.3, Intel® Core™ 2 Duo CPU E8400 @3.00GHz”, it’s an M890 motherboard and will support the Windows 7 upgrade.

- Look for the white DVI video out connector. M890 motherboards include both a blue VGA connector and white DVI connector.



- Check the serial number. Oscilloscopes with the M890 motherboard will have serial numbers:

Oscilloscope Series	Serial numbers
Infiniium 9000	greater than MY50410100
Infiniium 90000	greater than MY49470100
Infiniium 90000-X	all

If your Infiniium oscilloscope does not have the M890 motherboard, you must order an upgrade kit that includes one. For more information, see the *N2753A and N2754A Windows XP to Windows 7 Upgrade Kits* data sheet (<http://cp.literature.agilent.com/litweb/pdf/5990-8569EN.pdf>)

Step 2: Back up oscilloscope data

CAUTION

Using this product will reformat, and install the Windows 7 Embedded OS onto, the oscilloscope hard drive. All information will be deleted!

CAUTION

Agilent provides the Infiniium Data Saver utility to save calibration data and license files.

However, the Infiniium Data Saver does NOT save setups, masks, measurements, waveforms, screens, filters, or user-defined functions.

If you want to keep this additional information, you need to save it manually (which could require an additional storage device).

In Windows XP, the default root directory for storing this information is C:\Documents and Settings\All Users\[Shared] Documents\Infiniium. Measurements, waveforms, and screens are stored in the root directory. Setups, masks, filters, and user-defined functions each have their appropriately named folder under the root directory.

If any changes were made to the GUI, and you want to migrate these to the oscilloscope running under Windows 7, open the oscilloscope application. From the menu at the top of the screen, click **Utilities > eGUI** and select **Edit the eGUI file....** Copy the text to a notepad (or other) file and save to the storage device.

You will also need to manually save all user data and licenses associated with non-scope applications that you may have additionally installed on the oscilloscope. Examples include Matlab, 89600 VSA software, and Microsoft Office. After the Windows 7 installation is complete, you will need to manually re-install the applications and restore the saved user license and data files associated with these applications.

To save calibration data and license files:

- 1 Power up the oscilloscope. When the oscilloscope screen appears, minimize it.
- 2 Take note of your computer's name.

This is necessary in order to restore the calibration data and license files after upgrading to Windows 7.

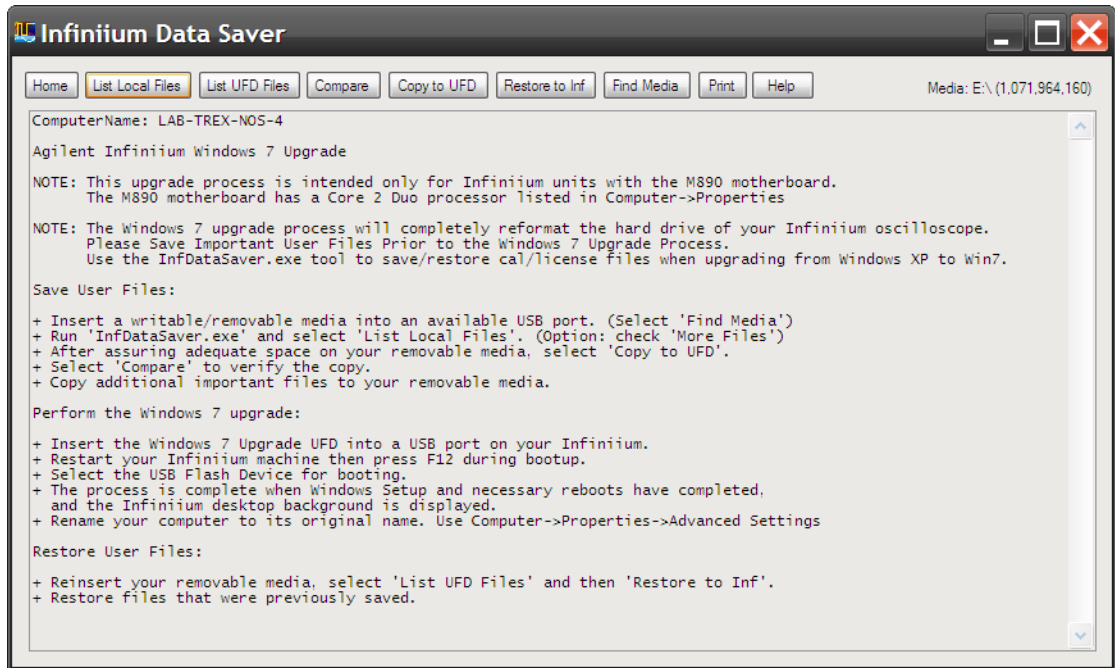
The computer name can be found by:

- a Click **Start**, then right-click on **My Computer**, and choose **Properties**.
- b In the **Systems Properties** dialog, click the **Computer Name** tab.

The computer's name is listed beside **Full Computer Name**.

- 3 Insert the flash drive into any available USB port and allow the computer time to recognize it.

- 4 Click **Start** and select **My Computer**.
- 5 In the **My Computer** dialog, under **Devices with Removable Storage**, double-click the **Inf Win7** drive.
- 6 In the **Inf Win7** drive folder, double-click **InfDataSaver.exe**, and follow the instructions to save calibration and license files to the flash drive.



Step 3: Load the Windows 7 operating system

NOTE

This process will take about 1 hour to complete.

To load the Windows 7 operating system:

- 1 With the flash drive installed in any USB port, cycle power on the oscilloscope and hold down **F12** until the boot menu appears.
- 2 Using the keyboard, press the up/down keys to highlight **USB:** and press **Enter**.

This begins the Windows 7 upgrade process. Follow the instructions on screen and in the following steps.

- 3 After about 20 minutes, the oscilloscope will request a hard shut down. Click **OK**. The oscilloscope will power down.
- 4 Power up the oscilloscope. The upgrade to continue.
- 5 The oscilloscope will perform tasks associated with the registry, services, devices, and applying system settings; then it will execute a restart.
- 6 The oscilloscope will check the video performance then execute another restart.
- 7 The oscilloscope should display that it is preparing the computer for its first use. During this process, the display will go blank for about 2 minutes. **DO NOT CYCLE POWER!**
- 8 When the Infiniium background screen is displayed, the upgrade to Windows 7 is complete.
- 9 Attach the Windows 7 Certificate of Authenticity to the rear panel of the oscilloscope just above the existing Windows XP Certificate of Authenticicity, as shown in the following picture.



9000 Series



90000-X/90000 Series

Step 4: Load the oscilloscope application and support code

Loading the oscilloscope application and support code:

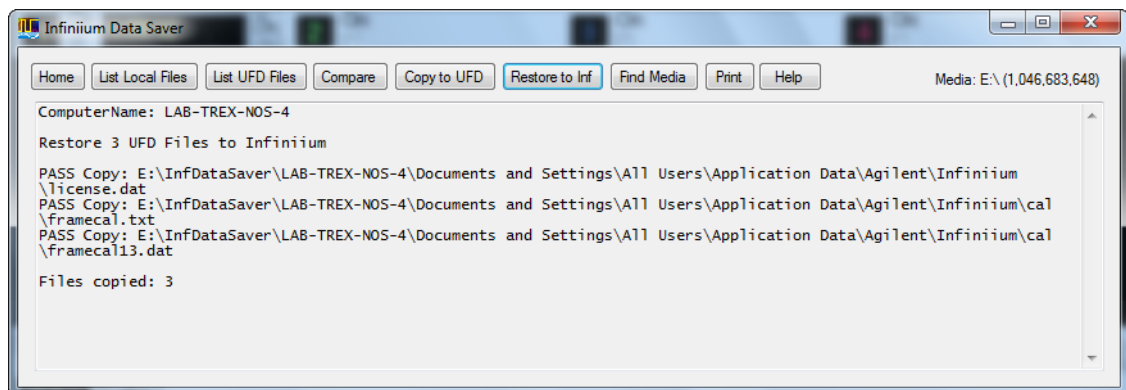
- 1 Connect the oscilloscope to the Internet.
- 2 Open a browser window: click **Start**, type “iexplore” in the search field, and press **Enter**.
- 3 In the URL address field, type “www.agilent.com/find/Infiniium-sw” and press **Enter**.

- 4 Follow the instructions under **System Recovery Process**.
- 5 After executing the touch calibration, the oscilloscope is ready for use.

Step 5: Restore oscilloscope data

To restore calibration data and license files:

- 1 Minimize the oscilloscope application.
- 2 Rename the computer.
 - a Click **Start**, then right-click on **Computer**, and choose **Properties**.
 - b On the “View basic information about your computer” page, scroll down to the “Computer name, domain, and workgroup settings” section; then, click **Change settings** (on the right).
 - c In the Systems Properties dialog’s Computer Name tab, click **Change...**
 - d In the Computer Name/Domain Changes dialog, type in the name of the computer that was noted earlier.
 - e Click **OK** to close the Computer Name Changes, Systems Properties, and Control Panel dialogs.
- 3 Cycle power on the oscilloscope to allow the name to become effective.
- 4 After the oscilloscope restarts, click **Start** and select **Computer**.
- 5 In the **Computer** dialog, under **Devices with Removable Storage**, double-click the **Inf Win7** drive.
- 6 In the **Inf Win7** drive folder, double-click **InfDataSaver.exe** and follow the instructions to restore calibration and license files to the oscilloscope.



As mentioned earlier, the Infiniium Data Saver utility does NOT restore setups, masks, measurements, waveforms, screens, filters, or user-defined functions.

If you manually saved setups, masks, measurements, waveforms, screens, filters, and user-defined functions earlier, when saving oscilloscope data, restore those files now.

In Windows 7, the default root directory for storing this information is C:\Users\Public\[Shared] Public Documents\Infiniium. (Measurements, waveforms, and screens are stored in the root directory. Setups, masks, filters, and user-defined functions each have their appropriately named folder under the root directory.)

Finally, if you manually saved GUI changes earlier, when saving oscilloscope data, restore them now:

- 1 Open the oscilloscope application.
- 2 From the menu at the top of the screen, click **Utilities > eGUI** and choose **Edit the eGUI file...**
- 3 Copy the text from the notepad (or other) file and edit the text in the eGUI window.

Look out for folder differences from Windows XP to Windows 7.

